

DWG. NO.	096-4350		
REVISIONS			
SYM.	E.C.O.	DATE	APVD.
A	28428	2/26/16	
	UPDATED DIMS & WEIGHTS		
B	28959	11/22/17	
	DIM RACK MTG EARS		

**SPECIFICATIONS:**  
 SINGLE PHASE ON-LINE DOUBLE CONVERSION UNINTERRUPTIBLE POWER SUPPLY 2000VA/1800W

**INPUT**  
 RATED VOLTAGE: 220-240 VAC  
 FREQUENCY RANGE: 40-70 Hz  
 POWER FACTOR:  $\geq$  0.99 AT NORMAL VOLTAGE

**OUTPUT**  
 NOMINAL VOLTAGE: 200\*/208\*/220/230/240 VAC  $\pm$ 1%  
 FREQUENCY SYNC RANGE: 47-53 Hz or 57-63 Hz  
 FREQUENCY RANGE (BAT. MODE): 50Hz  $\pm$ 0.5Hz or 60Hz  $\pm$ 0.5Hz  
 CURRENT CREST RATIO: 5:1 (MAX.)  
 HARMONIC DISTORTION:  $\leq$ 2% THD (LINEAR LOAD), 6% MAX. (BATTERY MODE BEFORE SHUT DOWN)  
 EFFICIENCY: LINE MODE: 88%  
                   BATTERY MODE: 86%  
                   ECO MODE: 95%

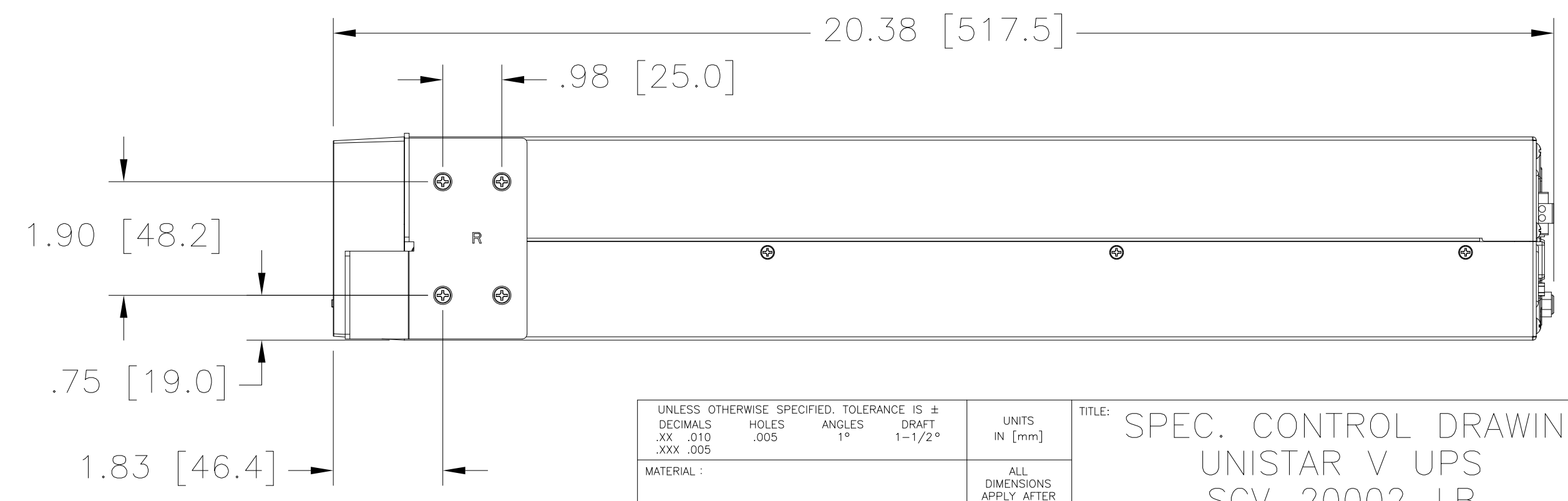
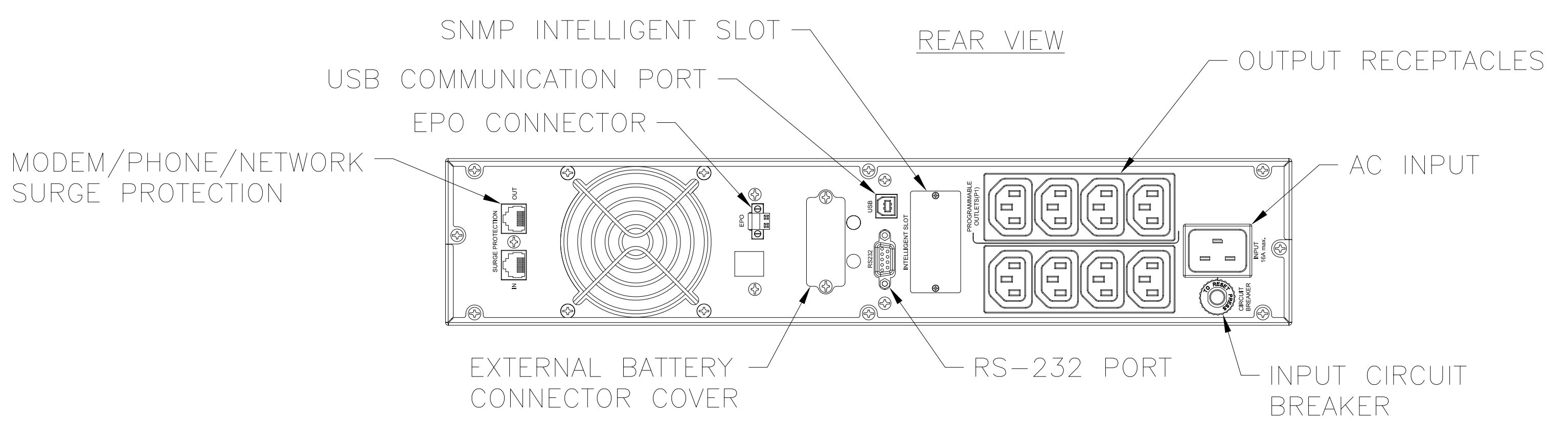
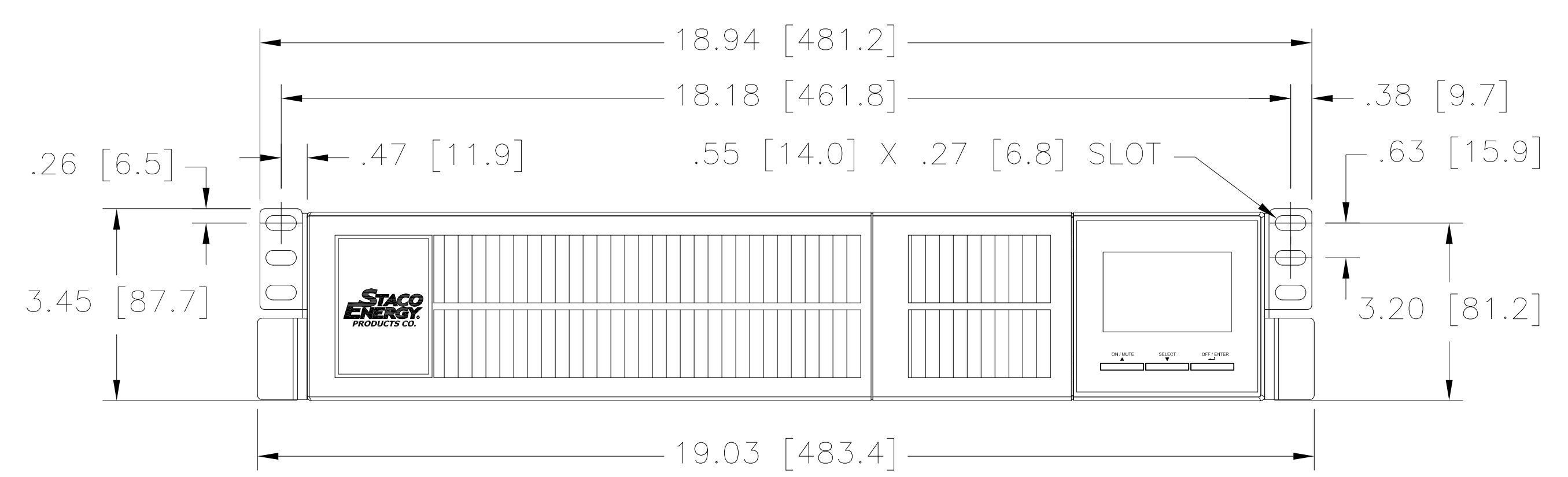
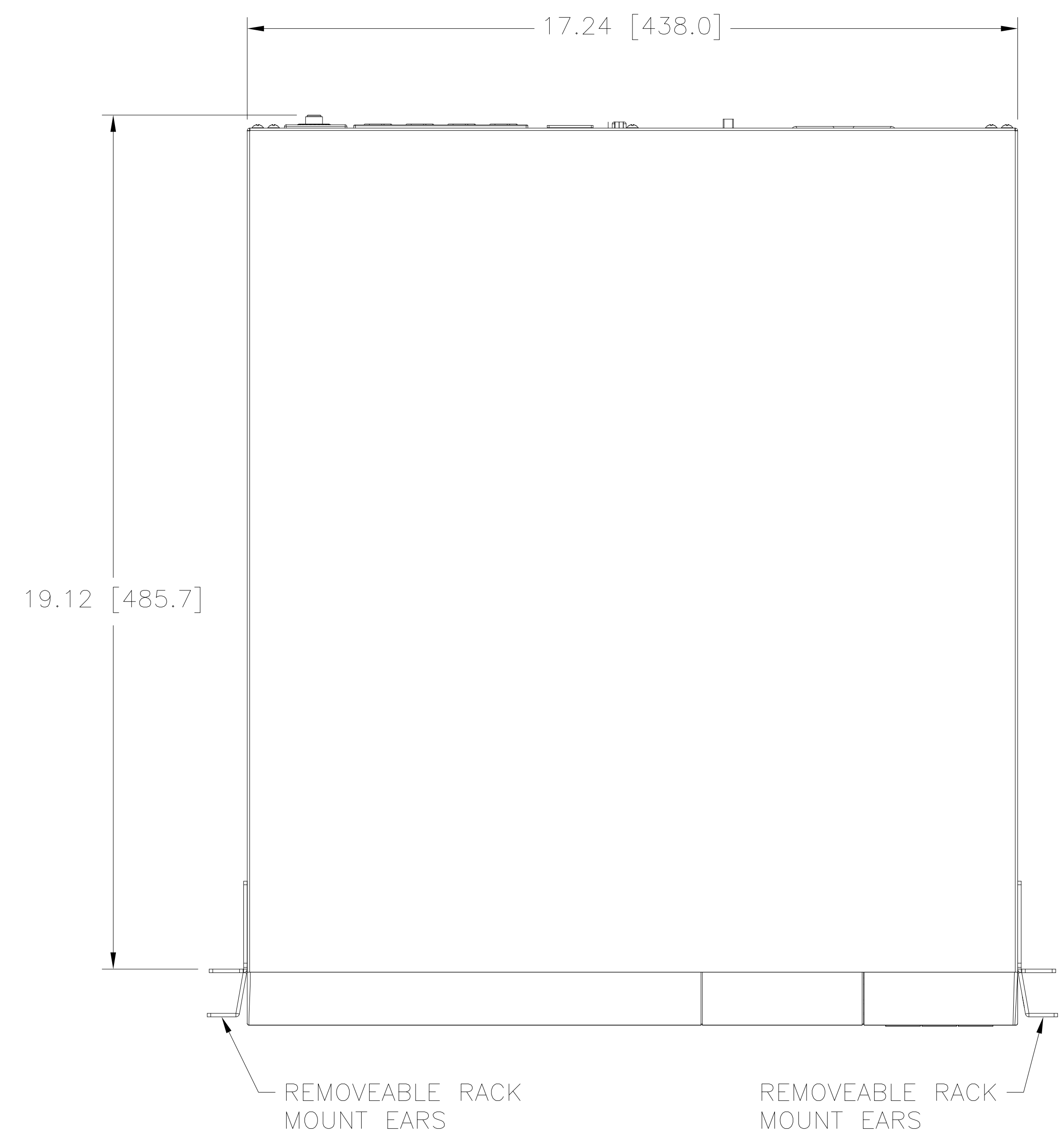
\*DERATE CAPACITY TO 80% WHEN THE OUTPUT VOLTAGE IS ADJUSTED TO 200/208VAC.

CHARGING CURRENT: 1A/2A/4A OR 8A FOR EXTERNAL BATTERIES

WEIGHT: 24 LBS (11 KG)

**ENVIRONMENTAL**  
 OPERATING TEMPERATURE: 0°C-40°C (32°F-104°F)(THE BATTERY LIFE WILL DECREASE WHEN > 25°C (77°F))  
 ALTITUDE: <1000m (3281 FT), 2000m (6562 FT) MAX.  
 IF THE UPS IS INSTALLED OR USED IN A PLACE WHERE THE ALTITUDE IS ABOVE THAN 1000M, THE OUTPUT POWER MUST BE DERATED ONE PERCENT PER 100M.  
 HUMIDITY: 20-90% RH AT 0°C - 40°C NON-CONDENSING  
 NOISE: <50 dBA (AT 1 METER)

UL LISTED TO UL1778



UNLESS OTHERWISE SPECIFIED, TOLERANCE IS $\pm$		UNITS		TITLE: SPEC. CONTROL DRAWING	
DECIMALS	HOLES	ANGLES	DRAFT	UNSTAR V UPS	
.XX .010	.005	1°	1-1/2°	SCV-20002-LB	
.XXX .005				DRAWN BY SLB	
MATERIAL:				ALL DIMENSIONS APPLY AFTER PLATING	
The information and design disclosed herein was originated by and is the property of STACO ENERGY PRODUCTS CO., which reserves all patent, proprietary, design, manufacturing, reproduction, use and sale rights thereto, and to any article disclosed therein except to the extent rights are expressly granted to others. The foregoing does not apply to vendor proprietary parts.				DATE 9/2/15	FIRST USED ON
				DATE 9/2/15	DO NOT SCALE DWG.
				ENGINEER B.FOX	WEIGHT APPROX. 8.3008
				DATE 9/2/15	CAGE CODE 83008
				SCALE 1/2	SHEET 1 OF 1
				DWG. NO. 096-4350	



A Components Corporation of America Company  
 301 Gessie Boulevard Dayton, Ohio 45403 USA