

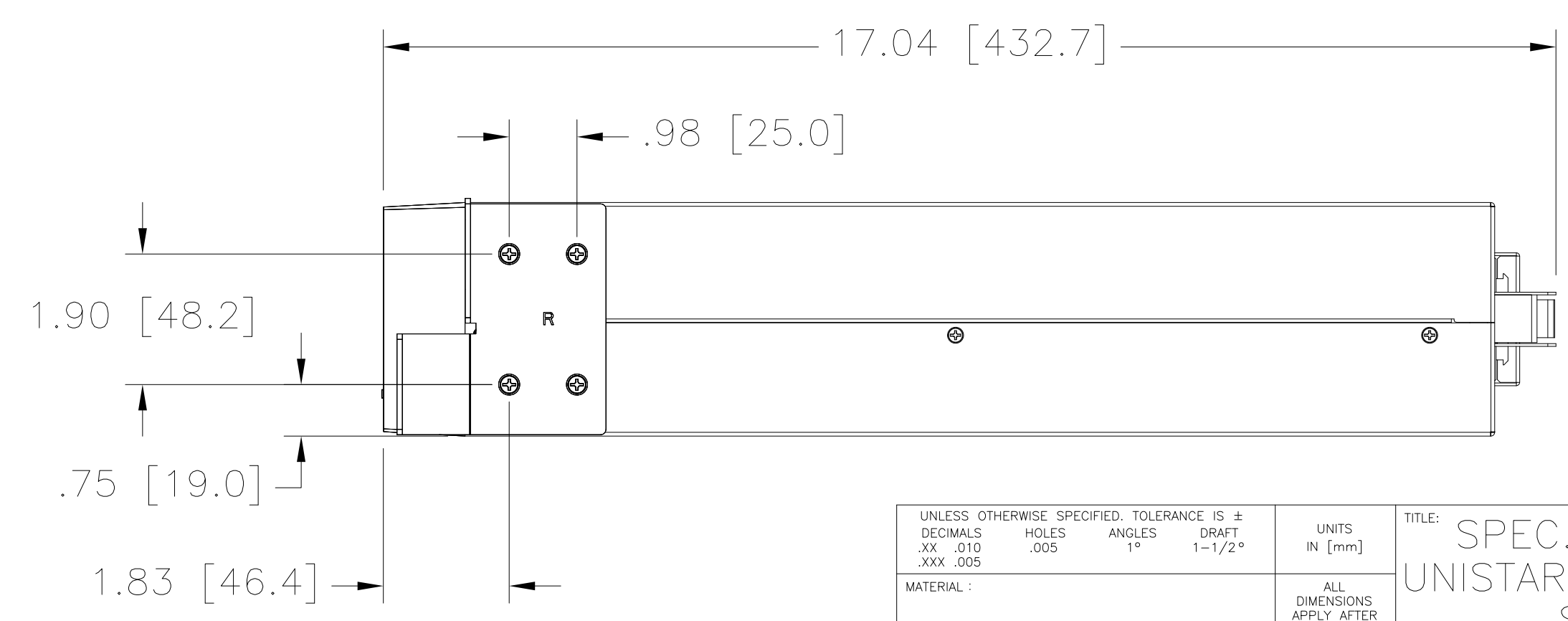
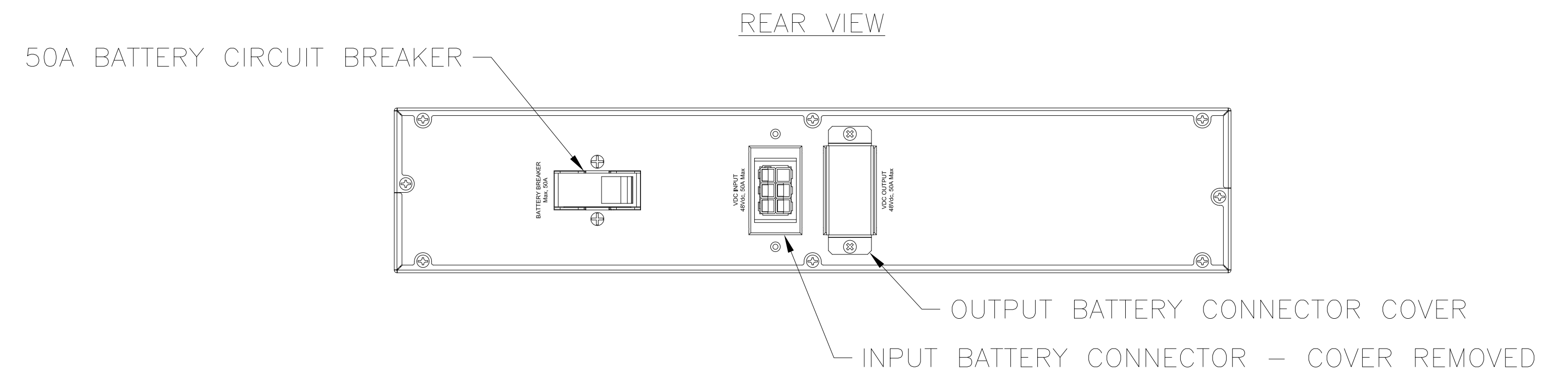
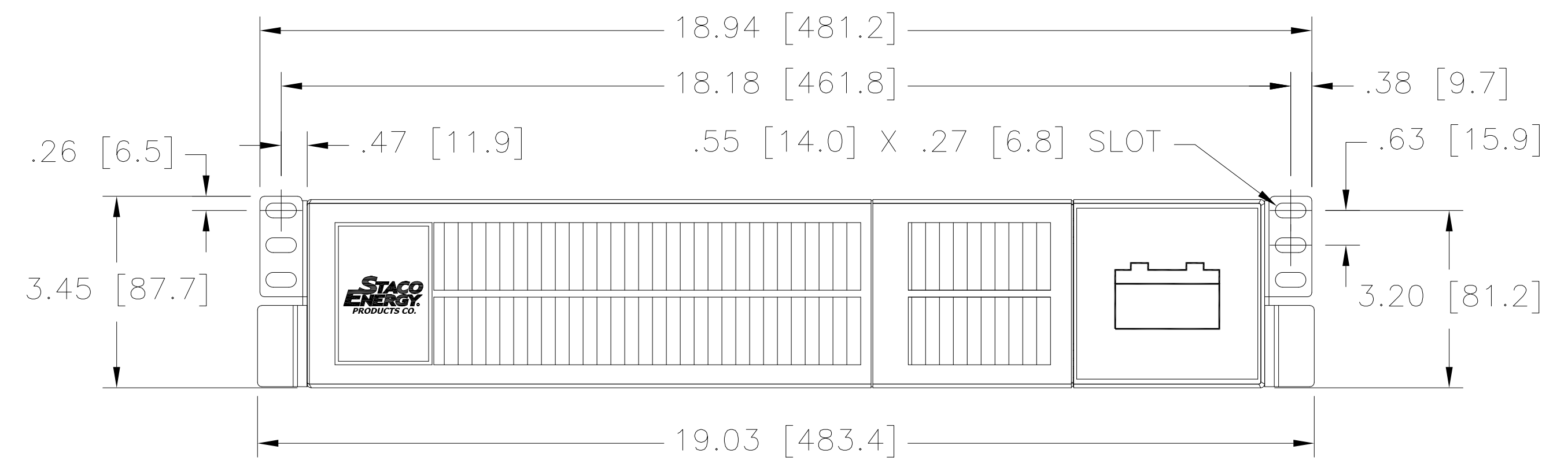
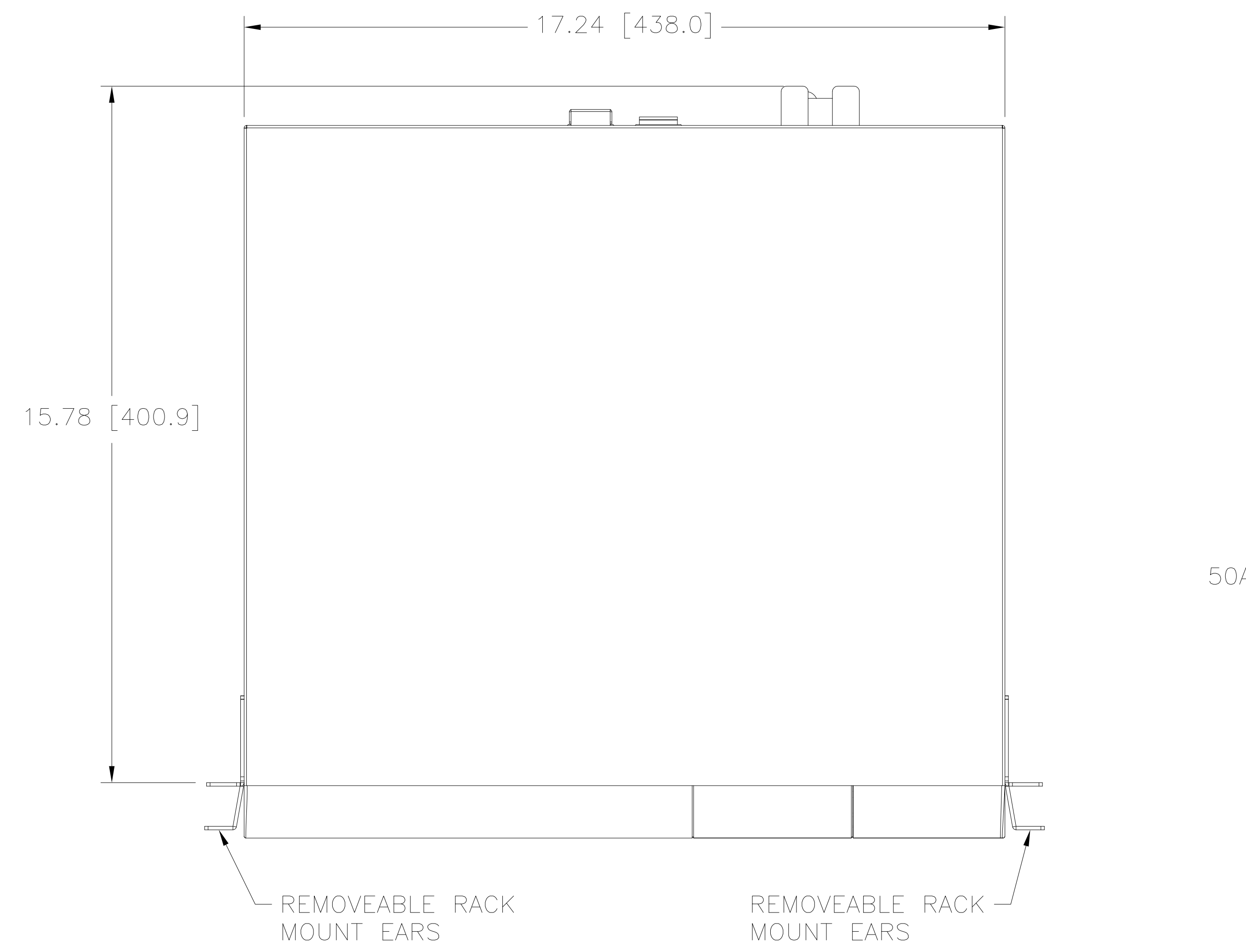
| | | | |
|-------------------|----------|----------|-------|
| DWG. NO. | 090-3116 | | |
| REVISIONS | | | |
| SYM. | E.C.O. | DATE | APVD. |
| A | 28959 | 11/22/17 | |
| DIM RACK MTG EARS | | | |

SPECIFICATIONS:
 USED WITH UPS MODEL: 1.5 KVA
 NOMINAL VOLTAGE: 36 VDC
 BATTERY TYPE: VRLA, 12V/9AH
 NUMBER OF BATTERIES: 6

WEIGHT: 47 LBS (22 KG)

ENVIRONMENTAL
 OPERATING TEMPERATURE: 0°C-40°C (32°F-104°F)(THE BATTERY LIFE WILL DECREASE WHEN > 25°C (77°F))
 ALTITUDE: <1000m (3281 FT), 2000m (6562 FT) MAX.
 IF THE UPS IS INSTALLED OR USED IN A PLACE WHERE THE ALTITUDE IS ABOVE THAN 1000M, THE OUTPUT POWER MUST BE DERATED ONE PERCENT PER 100M.
 HUMIDITY: 0-95% RH AT 0°C-40°C NON-CONDENSING

UL LISTED TO UL1778



| | | | | | |
|---|-------|----------|------------------------------------|------------------------------|-------------------|
| UNLESS OTHERWISE SPECIFIED, TOLERANCE IS ± | | UNITS | | TITLE: SPEC. CONTROL DRAWING | |
| DECIMALS | Holes | ANGLES | DRAFT | UNISTAR V BATTERY CABINET | |
| .XX .010 | .005 | 1° | 1-1/2° | SCV-BAT-1.5K | |
| .XXX .005 | | | | DO NOT SCALE DWG. | |
| MATERIAL: | | | ALL DIMENSIONS APPLY AFTER PLATING | | |
| The information and design disclosed herein was originated by and is the property of STACO ENERGY PRODUCTS CO., which reserves all patent, proprietary, design, manufacturing, reproduction, use and sale rights thereto, and to any article disclosed therein except to the extent rights are expressly granted to others. The foregoing does not apply to vendor proprietary parts. | | DRAWN BY | DATE | FIRST USED ON | DO NOT SCALE DWG. |
| | | SLB | 1/27/16 | | |
| | | CHECKER | DATE | WEIGHT APPROX. | CAGE CODE |
| | | B.FOX | 3/3/16 | | 83008 |
| | | ENGINEER | DATE | SCALE | SHEET 1 OF 1 |
| | | B.FOX | 3/3/16 | 1/2 | |
| | | DWG. NO. | D 090-3116 | | |

