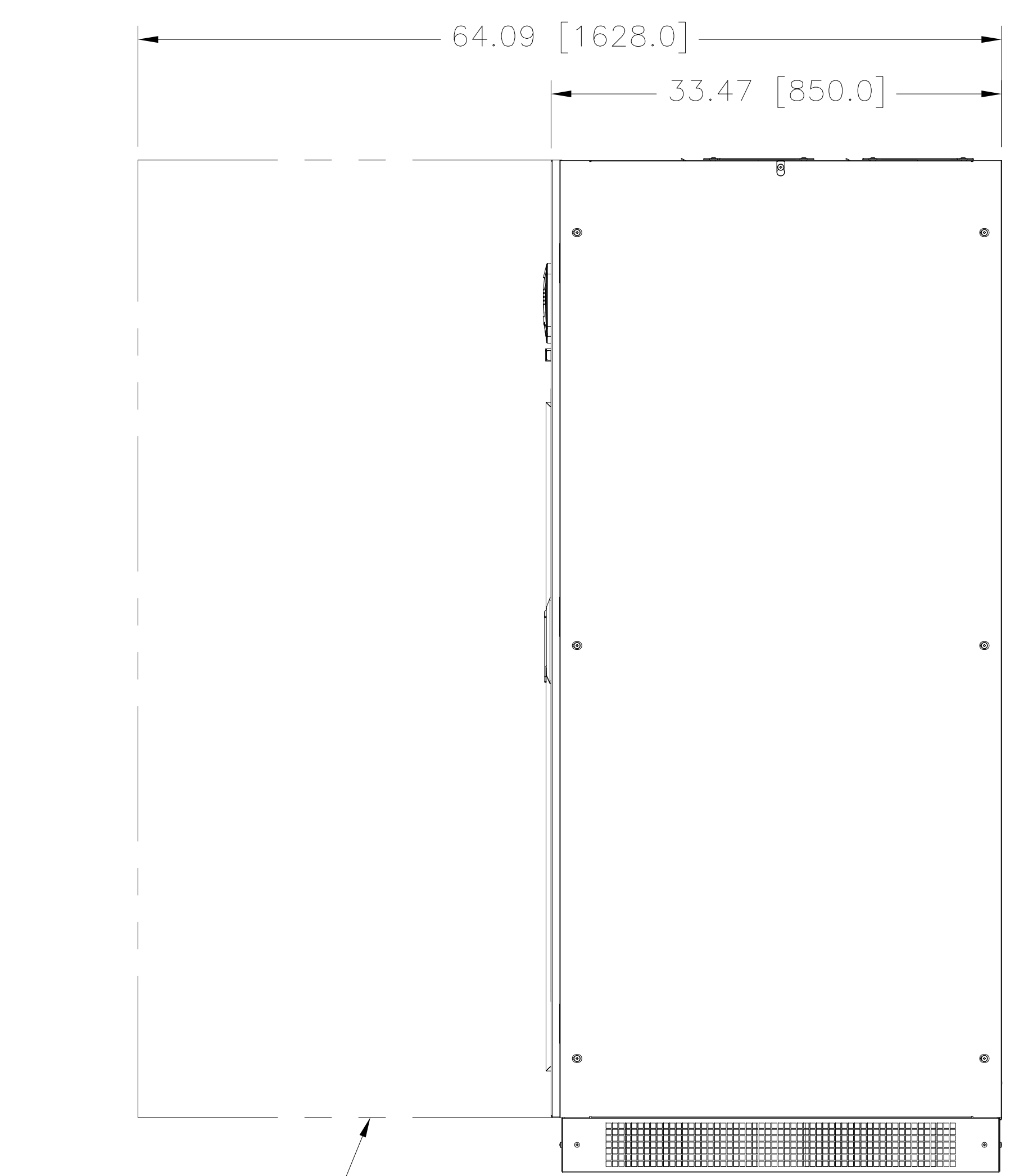
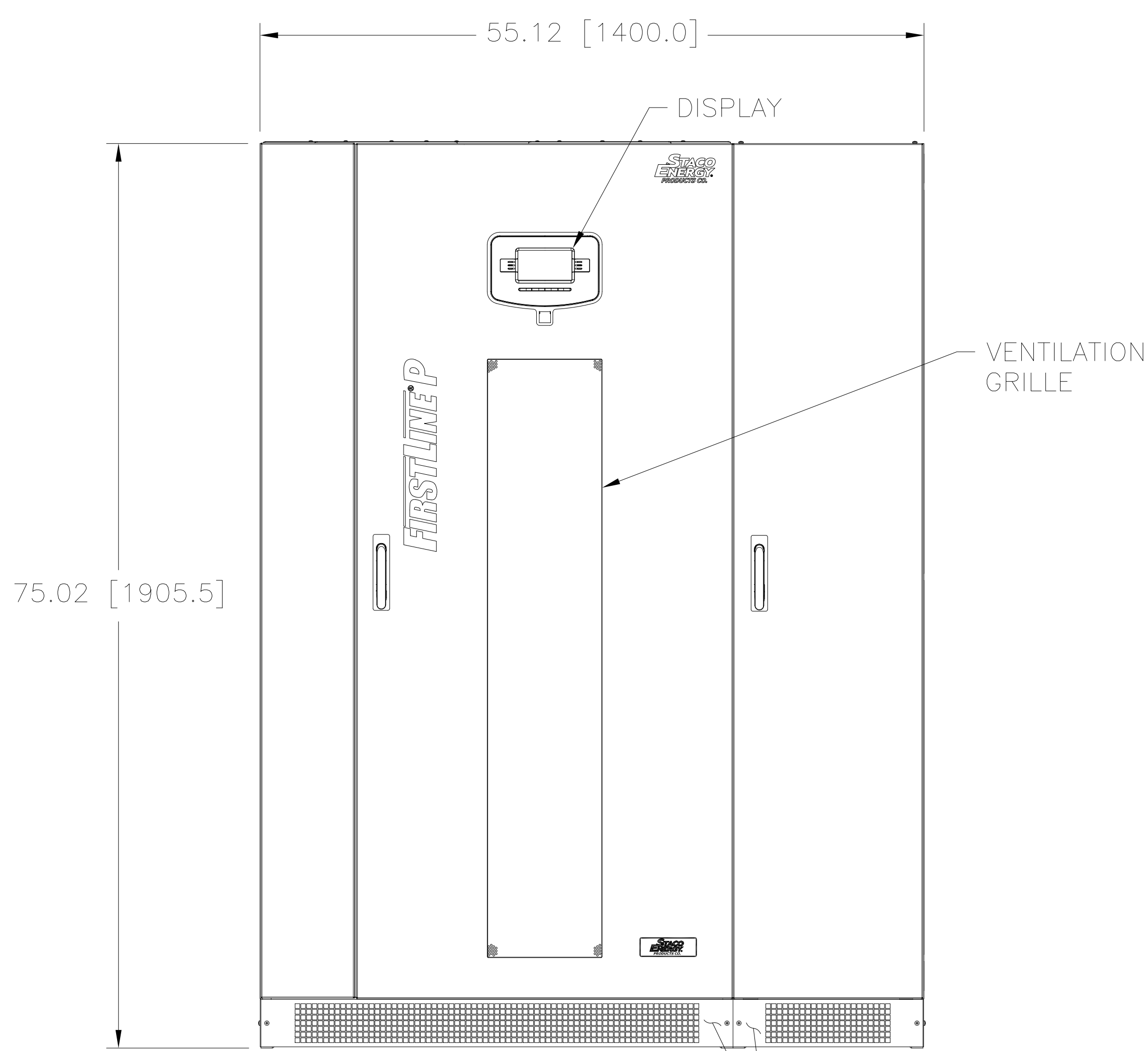


| | | | |
|---------------------------------|----------|----------|-------|
| DWG. NO. | 096-6047 | | |
| REVISIONS | | | |
| SYM. | E.C.O. | DATE | APVD. |
| A | 28192 | 6/30/15 | |
| CHANGED INPUT VOLTAGE TOLERANCE | | | |
| B | 28319 | 11/17/15 | |
| ADDED BUS BAR DETAIL ON SHEET 3 | | | |
| C | 28798 | 3/27/17 | |
| UPDATED SERVICE/VENT CLEARANCES | | | |



REMOVABLE COVERS FRONT AND REAR FOR FORK LIFT ACCESS

RIGHT SIDE VIEW

SUMMARY OF EQUIPMENT

THE FIRSTLINE P UNINTERRUPTIBLE POWER SUPPLY (UPS) IS A TRUE ON-LINE, DOUBLE CONVERSION, PARALLELABLE, THREE PHASE SYSTEM THAT CAN PREVENT THE LOSS OF ELECTRONIC INFORMATION AND MINIMIZE EQUIPMENT DOWN TIME.

THE FIRSTLINE P UPS CONSTANTLY MONITORS THE INCOMING ELECTRICAL POWER AND PROTECTS THE CONNECTED LOAD BY REMOVING VOLTAGE SPIKES, SAGS, TRANSIENTS, AND OTHER DAMAGING IRREGULARITIES THAT ARE COMMON IN COMMERCIAL UTILITY POWER. THE UPS SUPPLIES THE CLEAN, CONSISTENT POWER THAT SENSITIVE ELECTRONIC EQUIPMENT REQUIRES FOR RELIABLE OPERATION. DURING BROWNOUTS, BLACKOUTS, AND OTHER POWER INTERRUPTIONS, THE BATTERIES PROVIDE EMERGENCY POWER TO SAFEGUARD OPERATION.

THE FRONT DISPLAY PANEL PROVIDES ACCESS TO DETAILED INFORMATION REGARDING THE STATUS OF THE UTILITY, LOAD, AND FIRSTLINE UPS.

THE BLOCK DIAGRAM BELOW SHOWS THE MAIN FUNCTIONAL SUBASSEMBLIES OF THE FIRSTLINE P UPS. THE AC THREE PHASE UTILITY SUPPLY IS RECTIFIED TO PROVIDE DIRECT CURRENT, THE INVERTER WHICH PROVIDES THE THREE PHASE OUTPUT, AND ELECTRONIC STATIC SWITCH.

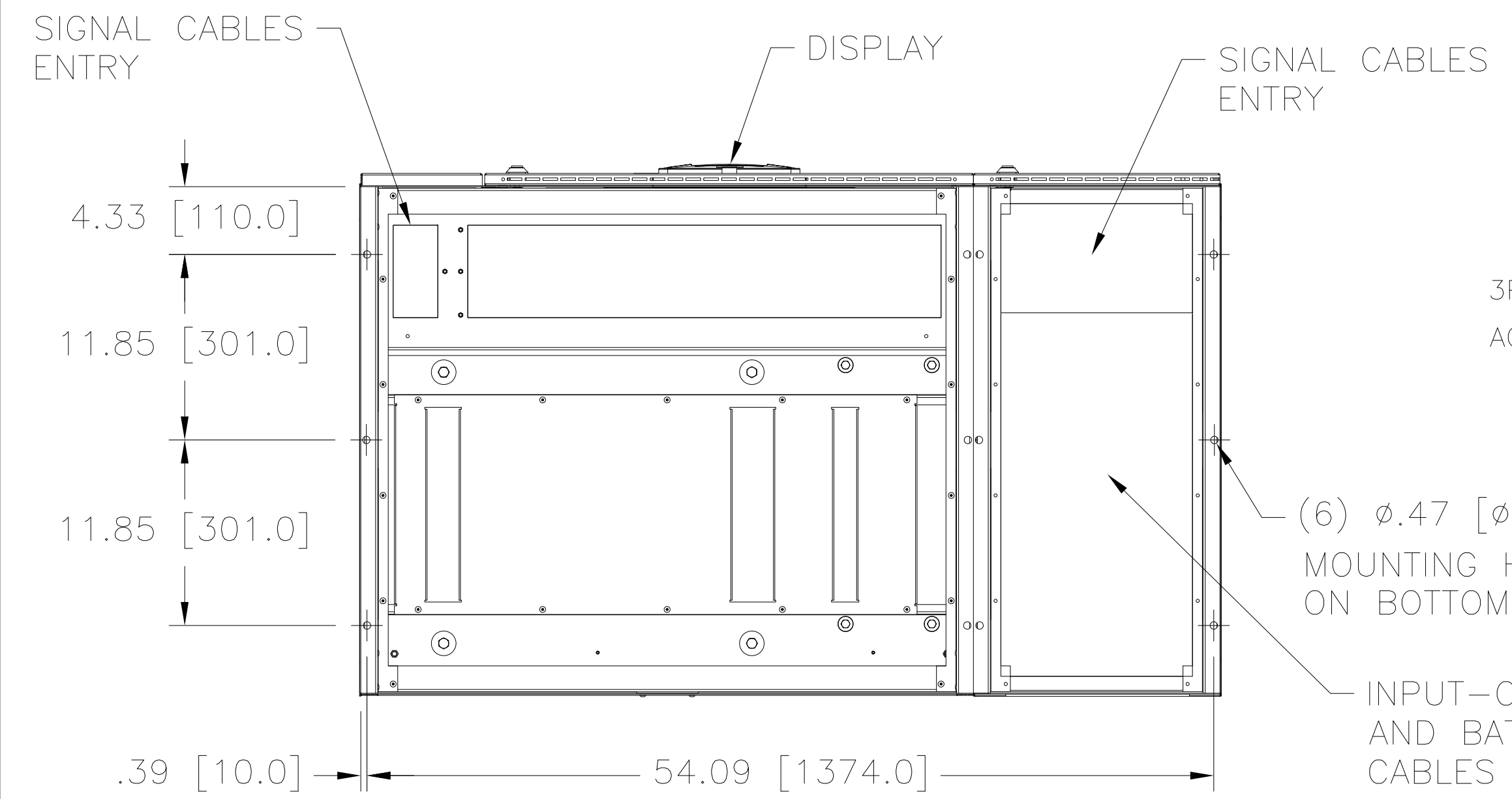
PROVIDED THE UTILITY IS WITHIN LIMITS, THE INVERTER WILL MATCH THE OUTPUT FREQUENCY WITH THE UTILITY FREQUENCY. THE INVERTER HAS ITS OWN INTERNAL CONTROL TO STABILIZE THE OUTPUT FREQUENCY IF THE UTILITY FREQUENCY IS OUT OF LIMITS. THE ELECTRONIC STATIC SWITCH SWITCHES THE OUTPUT FROM THE INVERTER TO THE UTILITY, WITHOUT INTERRUPTION, TO MEET ANY LOAD CURRENT SURGES.

UPS CAN BE CONFIGURED FOR WYE-WYE OR DELTA-DELTA APPLICATIONS. DELTA-WYE APPLICATIONS REQUIRE EXTERNAL TRANSFORMER.

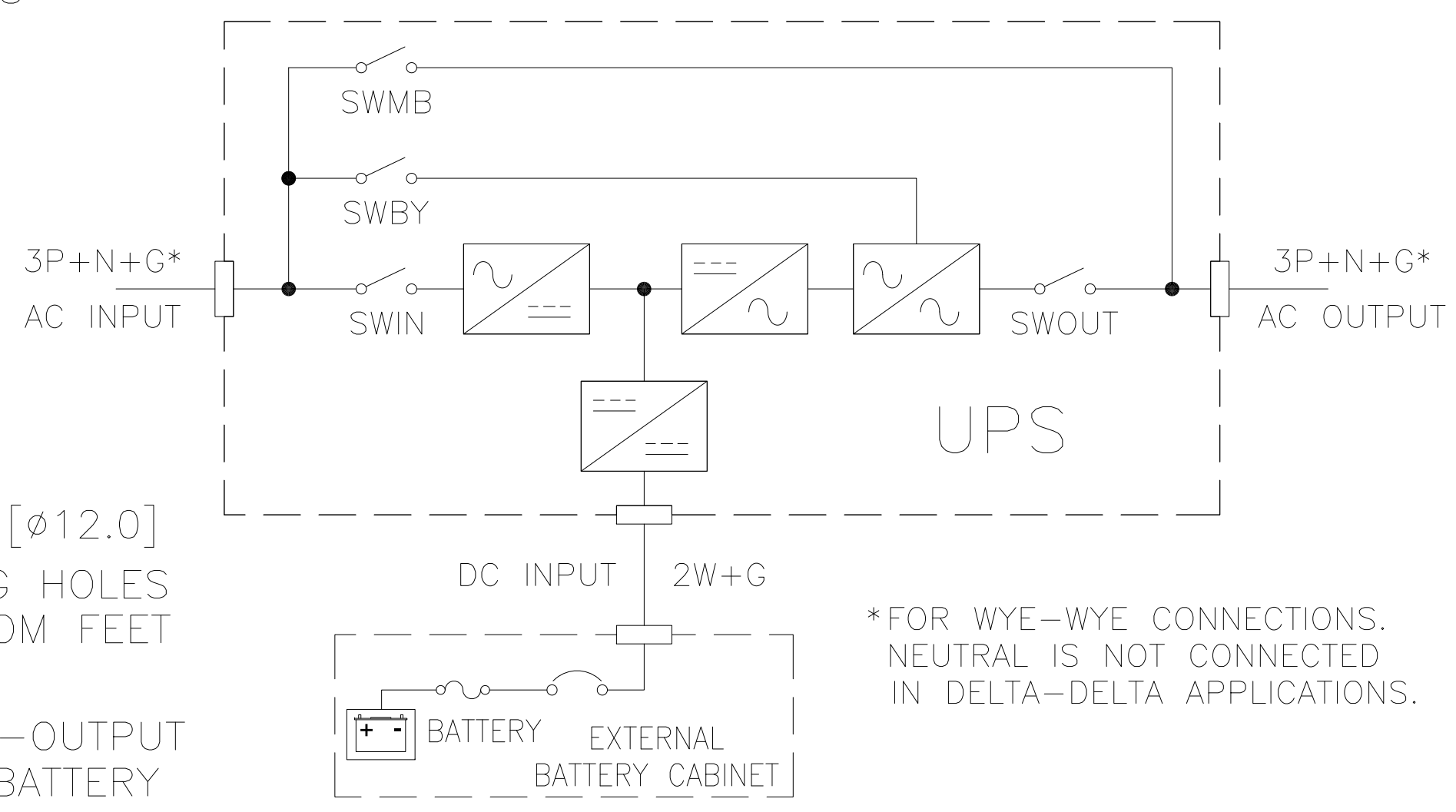
ENVIRONMENTAL
 OPERATING TEMPERATURE: 0°C TO 40°C
 ALTITUDE: 0-3300 FEET [1000 METERS] (WITHOUT DERATING)
 RELATIVE HUMIDITY: 0-95%, NON-CONDENSING

SERVICE/VENTILATION CLEARANCES
 FROM TOP OF CABINET: 24.00 [609.6]
 FROM FRONT OF CABINET: 36.00 [914.4]
 FROM ONE SIDE OF CABINET (RIGHT, LEFT OR REAR): 24.00 [609.6]

UL LISTED TO UL924, FILE NO.: OUST.E191175



BOTTOM VIEW
 AS VIEWED FROM BOTTOM
 SEE SHEET 2 FOR TOP VIEW



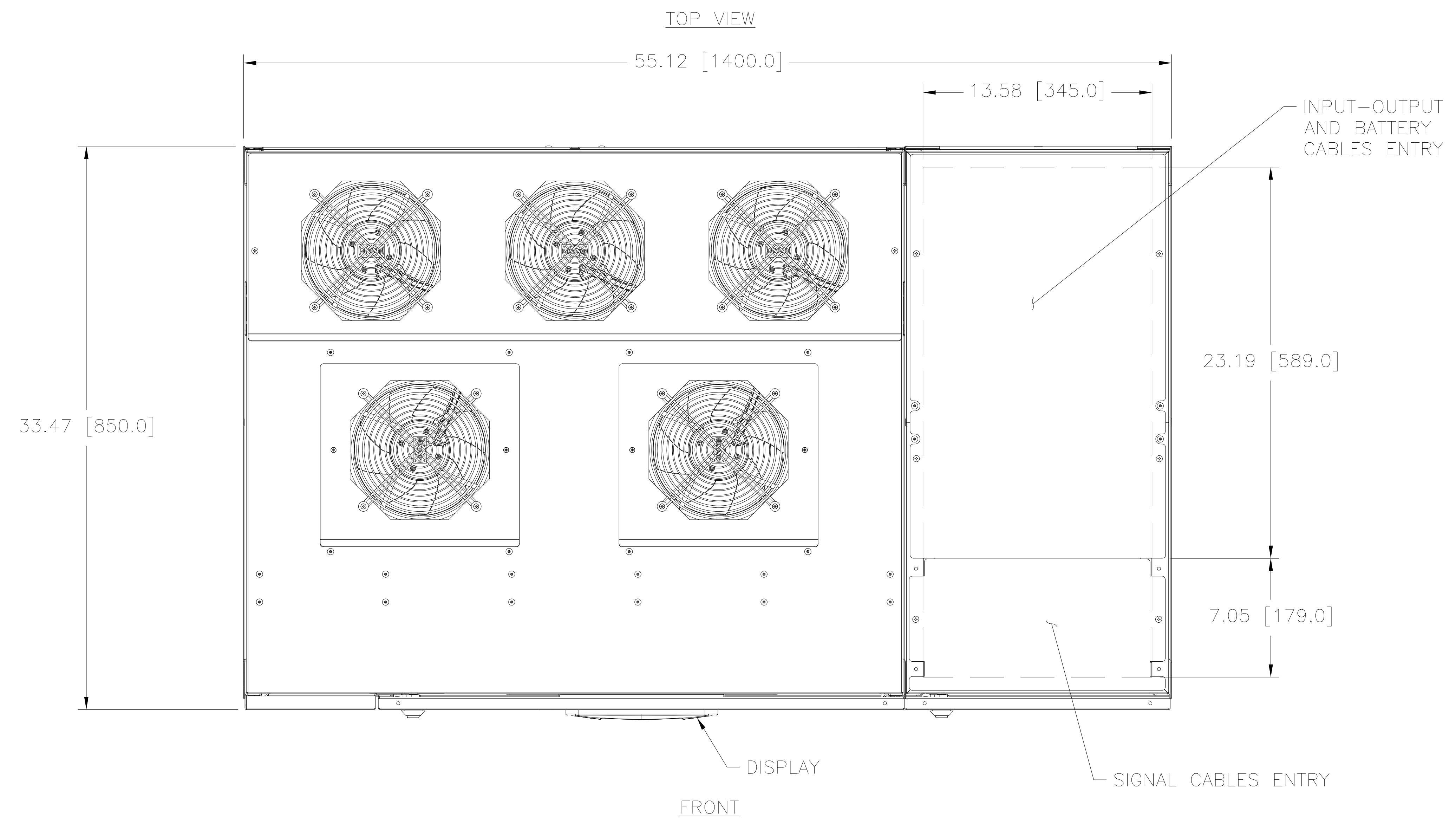
NOTE:
 AC AND DC CABLES PROVIDED BY OTHERS.
 CABLE LUGS PROVIDED BY OTHERS.

| FIRSTLINE P UPS OUST SPECIFICATIONS | | | | | | |
|-------------------------------------|-----|----------------------------------|----------------------------|------------------------------|-------------------------------|-------------------------|
| MODEL | kW | INPUT VOLTAGE (+15%, -10%) 60 HZ | OUTPUT VOLTAGE (±1%) 60 HZ | MAXIMUM INPUT CURRENT (AMPS) | NOMINAL OUTPUT CURRENT (AMPS) | WEIGHT APPROX. LBS (KG) |
| FLU-P-T-924-144-OST | 144 | 480Y/277 | 480Y/277 | 212 | 192 | 2326 (1055) |
| FLU-P-T-924-180-OST | 180 | 480Y/277 | 480Y/277 | 265 | 241 | 2546 (1155) |
| FLU-P-T-924-210-OST | 210 | 480Y/277 | 480Y/277 | 309 | 281 | 2767 (1255) |
| FLU-P-T-924-225-OST | 225 | 480Y/277 | 480Y/277 | 331 | 301 | 2767 (1255) |

| | | | | | | | |
|--|---|--|----------------------|--------------|-----------------------|-------------------|-------------------|
| UNLESS OTHERWISE SPECIFIED, TOLERANCE IS ± | TITLE: SPECIFICATION CONTROL DRAWING | | DRAWN BY: S.A. SMITH | DATE: 2/6/15 | FIRST USED ON | DO NOT SCALE DWG. | DWG. NO. 096-6047 |
| DECIMALS .005 | FIRSTLINE P UPS UL924 OUST UNINTERRUPTIBLE POWER SUPPLY | | | | | | |
| XX .005 | MATERIAL: | | CHECKER: SAS | DATE: 2/6/15 | WEIGHT APPROX. 8.3008 | CAGE CODE 83008 | DWG. SIZE D |
| XXX .005 | ALL DIMENSIONS APPLY AFTER PLATING | | ENGINEER: SAS | DATE: 2/6/15 | SCALE: 1/8 | SHEET 1 OF 3 | |



| | | | |
|-----------|----------|-------------|-------|
| DWG. NO. | 096-6047 | | |
| REVISIONS | | | |
| SYM. | E.C.O. | DATE | APVD. |
| A | 28192 | 6/30/15 | |
| | | SEE SHEET 1 | |
| B | 28319 | 11/17/15 | |
| | | SEE SHEET 1 | |
| C | 28798 | 3/27/17 | |
| | | SEE SHEET 1 | |

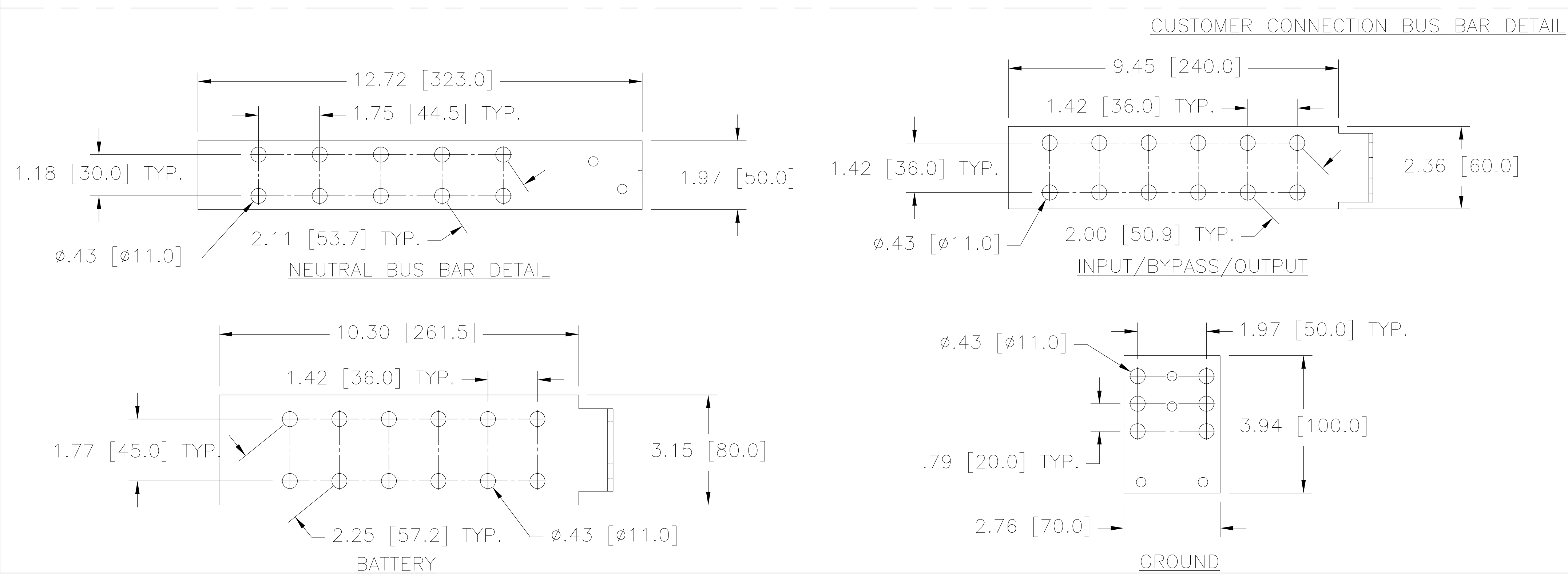
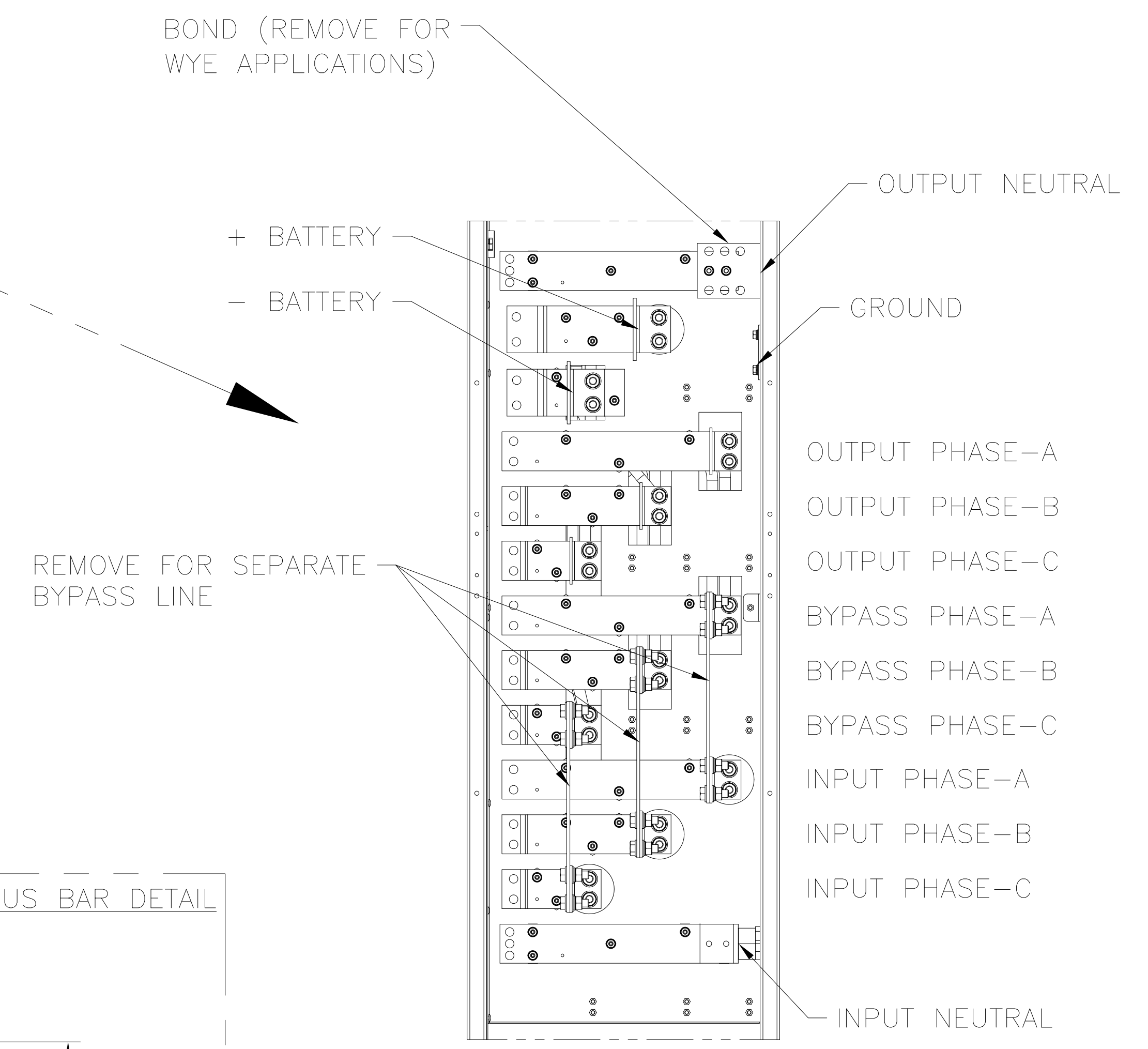
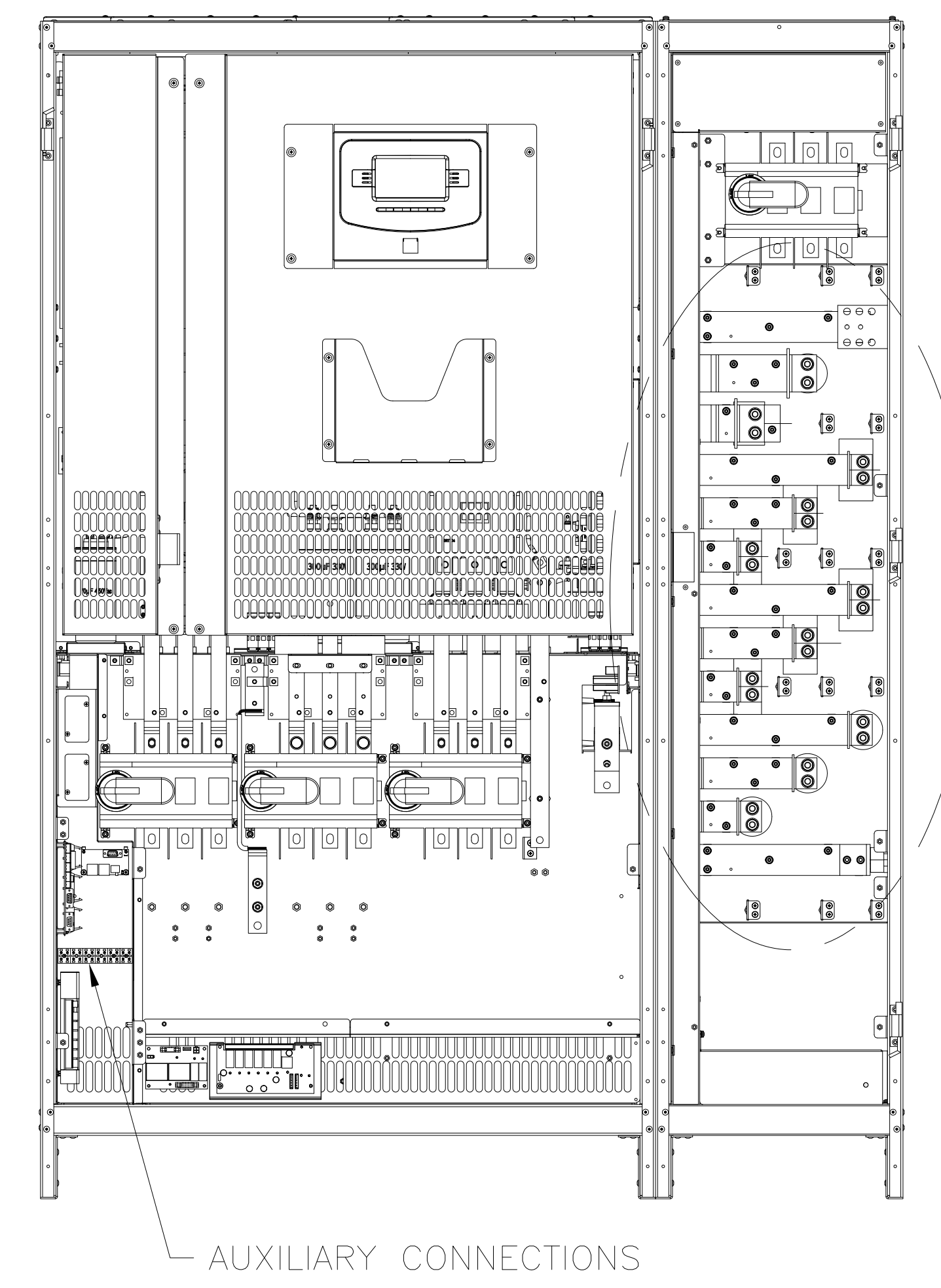
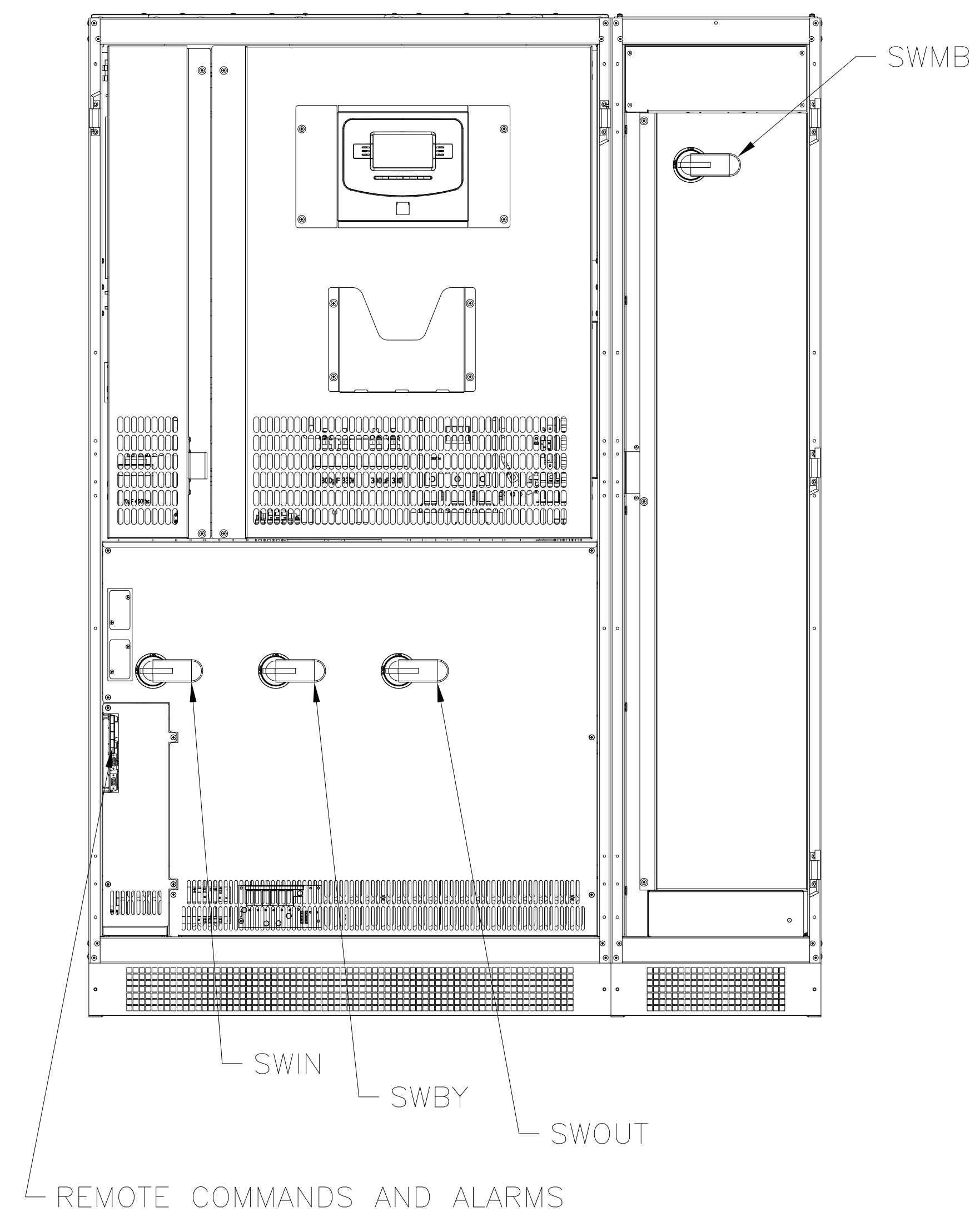


| | | | | | |
|--|------|------------------------------------|--------|-------------------------------|--|
| UNLESS OTHERWISE SPECIFIED, TOLERANCE IS ± | | UNITS | | TITLE: | |
| DECIMALS | HOLE | ANGLES | DRAFT | SPECIFICATION CONTROL DRAWING | |
| .XX | .06 | 1° | 1-1/2° | FIRSTLINE P UPS UL924 OUST | |
| .XXX | .005 | | | UNINTERRUPTIBLE POWER SUPPLY | |
| MATERIAL: | | ALL DIMENSIONS APPLY AFTER PLATING | | DRAWN BY | |
| | | | | S.A. SMITH | |
| | | | | DATE | |
| | | | | 2/6/15 | |
| | | | | FIRST USED ON | |
| | | | | DO NOT SCALE DWG. | |
| | | | | CHECKER | |
| | | | | SAS | |
| | | | | DATE | |
| | | | | 2/6/15 | |
| | | | | WEIGHT APPROX. | |
| | | | | 8.3008 | |
| | | | | ENGINEER | |
| | | | | SAS | |
| | | | | SCALE | |
| | | | | 1/4 | |
| | | | | SHEET 2 OF 3 | |
| | | | | DWG. NO. | |
| | | | | 096-6047 | |



A Components Corporation of America Company
301 Goodin Boulevard Dayton, Ohio 45403 USA

| | | | |
|-----------|----------|----------|-------------|
| DWG. NO. | 096-6047 | | |
| REVISIONS | | | |
| SYM. | E.C.O. | DATE | APVD. |
| A | 28192 | 6/30/15 | SEE SHEET 1 |
| B | 28319 | 11/17/15 | SEE SHEET 1 |
| C | 28798 | 3/27/17 | SEE SHEET 1 |



| | | | | | |
|--|-------|------------------------------------|--------|-------------------------------|--|
| UNLESS OTHERWISE SPECIFIED, TOLERANCE IS ± | | UNITS | | TITLE: | |
| DECIMALS | HOLES | ANGLES | DRAFT | SPECIFICATION CONTROL DRAWING | |
| .XX | .06 | 1° | 1-1/2° | FIRSTLINE P UPS UL924 OUST | |
| .XXX | .005 | | | UNINTERRUPTIBLE POWER SUPPLY | |
| MATERIAL: | | ALL DIMENSIONS APPLY AFTER PLATING | | DRAWN BY | |
| | | | | S.A. SMITH | |
| | | | | DATE | |
| | | | | 2/6/15 | |
| | | | | FIRST USED ON | |
| | | | | DO NOT SCALE DWG. | |
| | | | | CHECKER | |
| | | | | SAS | |
| | | | | DATE | |
| | | | | 2/6/15 | |
| | | | | WEIGHT APPROX. | |
| | | | | 8.3008 | |
| | | | | ENGINEER | |
| | | | | SAS | |
| | | | | SCALE | |
| | | | | 1/8 | |
| | | | | SHEET 3 OF 3 | |
| | | | | DWG. NO. | |
| | | | | 096-6047 | |

The information and design disclosed herein was originated by and is the property of STACO ENERGY PRODUCTS CO., which reserves all patent, proprietary, design, manufacturing, reproduction, use and sale rights thereto, and to any article disclosed therein except to the extent rights are expressly granted to others. The foregoing does not apply to vendor proprietary parts.

STACO ENERGY PRODUCTS CO.
A Components Corporation of America Company
301 Gessner Boulevard Dayton, Ohio 45403 USA